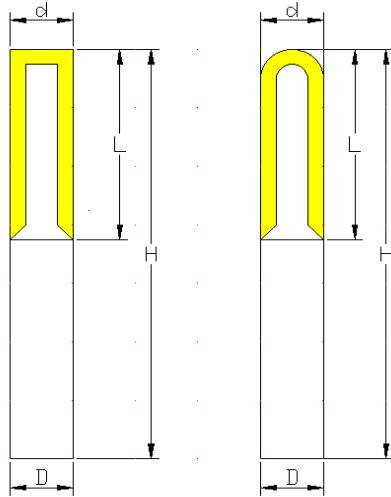


ELECTROPLATED DIAMOND TOOLS FOR STONE WORKING

	PAGE
MINI ROUTER BITS CYLINDRICAL CONNECTION	1
ROUTER BITS 1/2GAS CONNECTION	2
SMALL DIAMETER DISC FOR ENGRAVING CONNECTION M14	3
ROTATING DIAMOND FILES FOR HAND MACHINES	4
ROTATING TOUCHER WHEELS CONECTION M14	5
MILLING TOOLS FOR HAND MACHINES CONNECTION M14	6
MILLING TOOLS WITH ROTATING GUIDE FOR MANUAL MACHINE	7
MILLING TOOLS FOR CNC MACHINES	8
RECESS STUBBING WHEELS	9
CUTTER WHEELS FOR TURNING	10
DRY CUTTING SAW BLADES FOR HAND MACHINES	11
DRY SAW BLADES FOR ROUND CUTTING	12
PROFILLING WHEELS BASED ON CUSTOMER DRAWING	13
CORE DRILLS CONNECTION M14 OR HEXAGON D10-14	14
DIAMOND MOUNTED WHEELS	15
ELECTROPLATED DIAMOND BEADS AND WIRE	16

MINI ROUTER BITS CYLINDRICAL CONNECTION



Flat



Round

CODE	D	d	L	H	MESH	Type	EUR
T6630F	6	6	20-30	80-120	30/40	F	8
T10630F	10	6	20-30	80-120	30/40	F	10
T10830F	10	8	20-30	80-120	30/40	F	12
T101030F	10	10	20-30	80-120	20/30	F	15
T6630R	6	6	20-30	80-120	30/40	R	8
T10630R	10	6	20-30	80-120	30/40	R	10
T10830R	10	8	20-30	80-120	30/40	R	12
T101030R	10	10	20-30	80-120	20/30	R	15
T10830FW	10	8	20-30	80-120	30/40	FW	18
T101030FW	10	10	20-30	80-120	20/30	FW	18
T10830RW	10	8	20-30	80-120	30/40	RW	18
T101030RW	10	10	20-30	80-120	20/30	RW	18

F-flat R-round W-holes for cooling

Other sizes on request

Fingerbits 1/2GAS CONNECTION

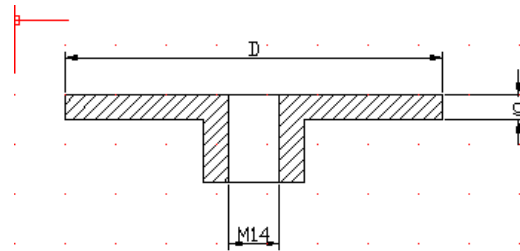


CODE	D	H	HT	MESH	EUR
RB4070A	18-25	40	70	30/40	55
RB4070B	18-25	40	70	25/30	60
RB5070A	18-25	50	70	30/40	57
RB5070B	18-25	50	70	25/30	67
RB6070A	18-25	60	70	30/40	57
RB6070B	18-25	60	70	25/30	67
RB7070A	18-25	70	70	30/40	72
RB7070B	18-25	70	70	25/30	86
RB403030A	50R25	25		30/40	100
RB403030B	50R25	25		25/30	90

Other sizes on request

The used tools can be replated. Price 10-30% less.

SMALL DIAMETER DISC FOR ENGRAVING CONNECTION M14



CODE	D	g	EUR
GR30.3	30	3	20
GR30.5	30	5	20
GR40.3	40	3	25
GR40.5	40	5	25
GR50.3	50	3	30
GR50.5	50	5	30
GR60.3	60	3	35
GR60.5	60	5	35

Diamond size 40/50 or 30/40
Other sizes and connections on request

ROTATING DIAMOND FILES FOR HAND MACHINES

Connection M14



Diamond coated part: L=170, d=10.5-12

Diamond mesh size available:

CODE	MESH	EUR
F852	20/30	95
F602	30/50	90
F427	40/50	90
F301	50/60	85
F181	100/180	75
F126	120/140	75

ROTATING TOUCHER WHEELS CONECTION M14



MILLING TOOLS FOR HAND MACHINES CONNECTION M14

Diamond size: 40/50 mesh



A-Concave

B-convex

Code	Type	Radius	EUR
PRA10	A	10	75
PRB10	B	10	75
PRA20	A	20	85
PRB20	B	20	85
PRA30	A	30	90
PRB30	B	30	90

Other shapes available on request

MILLING TOOLS WITH ROTATING GUIDE FOR MANUAL MACHINE

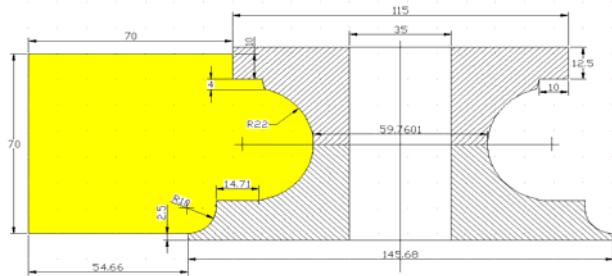
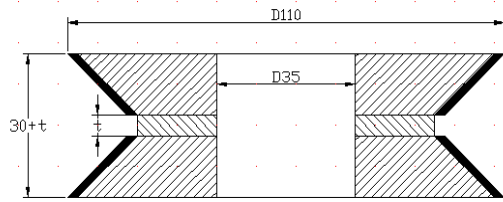
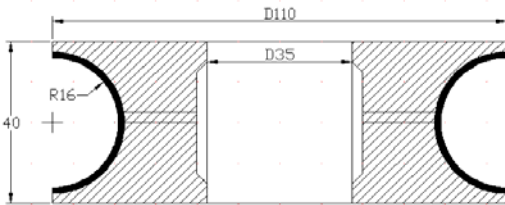
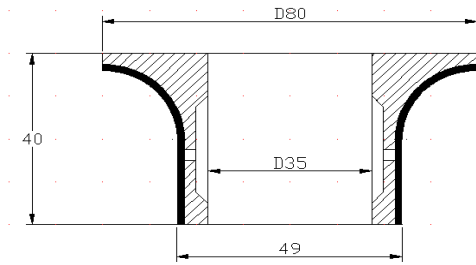


CODE	TILE	TYPE	EUR
RG10B	10	B	
RG20B	20	B	B-bullnose
RG30B	30	B	HB-halfbullnose
RG10HB	10	HB	
RG20HB	20	HB	
RG30HB	30	HB	

Diamond mesh size:

POS 1	40/50
POS 2	80/100
POS 3	120/140
POS 4	325/400

MILLING TOOLS FOR CNC MACHINES



PROFILING WHEELS BASED ON CUSTOMER DRAWING OR STONE SAMPLE

The used tools can be replated. Price 10-50% less.

RECESS STUBBING WHEELS



CODE	Dia	H	Fiting	Mesh
R85.20A	85	20	50-3+3 D6/63	602
R8530A	85	30	50-3+3 D6/63	602
R100.20A	100	20	50-3+3 D6/63	602
R100.30A	100	30	50-3+3 D6/63	602
R85.20B	85	20	50-3+3 D6/63	852
R8530B	85	30	50-3+3 D6/63	852
R100.20B	100	20	50-3+3 D6/63	852
R100.30B	100	30	50-3+3 D6/63	852
R50.20A	50	20	10-3+3 D6/25	602
R50.20B	50	20	10-3+3 D6/25	851

CUTTER WHEELS FOR TURNING



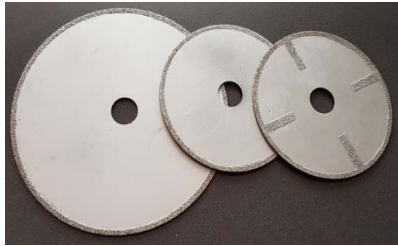
Diamond size: 30/40

CODE	D	Hole	T	Strips No	EUR
T300.60.6	300	60	6	12(40x10)	156
T350.60.6	350	60	6	12(40x10)	180
T400.60.6	400	60	6	12(50x10)	211
T300.60.10	300	60	10	12(40x10)	192
T350.60.10	350	60	10	12(40x10)	213
T400.60.10	400	60	10	12(50x10)	250
T450.60.10	450	60	10	12(50x10)	281
T500.60.10	500	60	10	16(60x10)	331

Other sizes on request

The used tools can be replated. Price 10-20% less.

DRY CUTTING SAW BLADES FOR HAND MACHINES



CONTINUOUS RIM NO REINFORCEMENT

CODE	D	HOLE	EUR
D100	100	22.2	15
D115	115	22.2	20
D125	125	22.2	25
D180	180	22.2	40
D230	230	22.2	50

CONTINUOUS RIM WITH FLANGE AND STRIPS REINFORCEMENT

CODE	D	HOLE	EUR
F125.4B.2F	125	22.2	40
F180.4B.2F	180	22.2	55
F230.4B.2F	230	22.2	70

CONTINUOUS RIM, ALUMINIUM FLANGE, WITH STRIPS AND DOTS

CODE	D	HOLE	EUR
F125RMB4B	125	22.2	50
F180RMB4B	180	22.2	80
F230RMB4B	230	22.2	110
F230RMB2F	230	22.2	150

DRY SAW BLADES FOR ROUND CUTTING



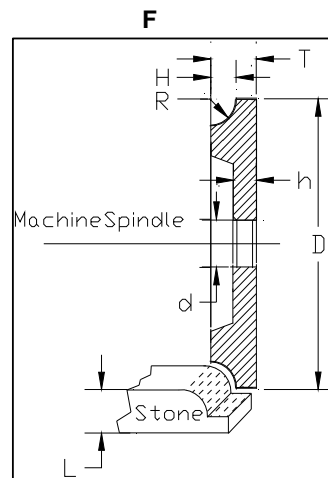
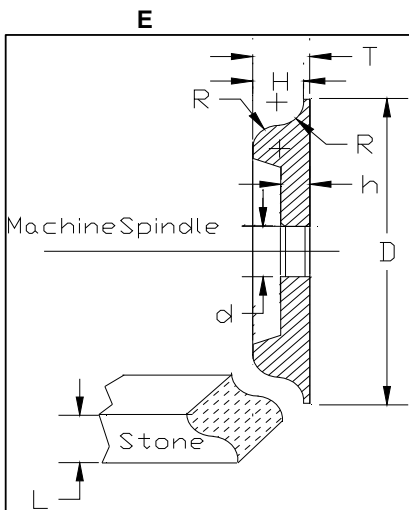
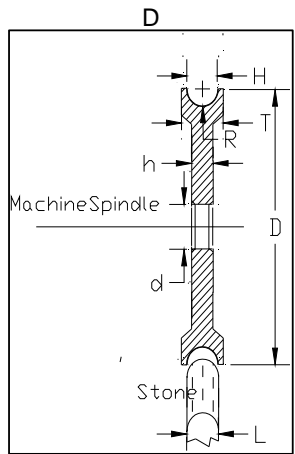
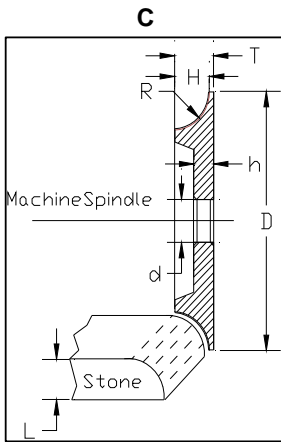
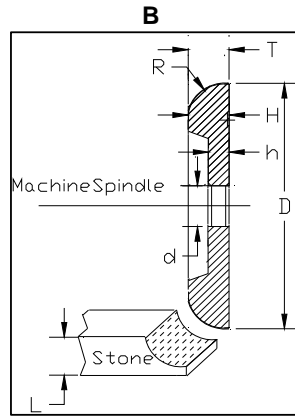
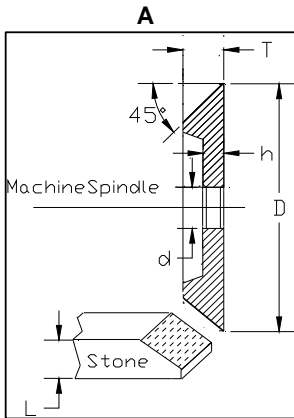
CODE	D	HOLE	EUR
	125	22.2	45
	150	22.2	55
	180	22.2	60

PROFILING WHEELS BASED ON CUSTOMER DRAWING OR STONE SAMPLE
Diameters: 150-400



The used tools can be replated. Price 10-20% less.

DIATOOLS

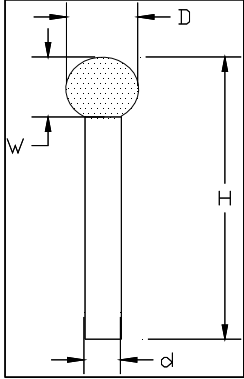


CORE DRILLS CONNECTION M14 OR HEXAGON D10-14

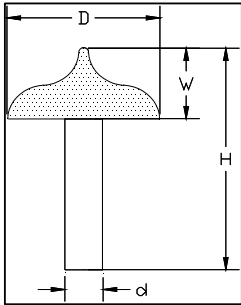


D	H	EUR
20	60	19
25	60	22
30	60	24
35	60	27
40	60	33
45	60	36
50	60	39
55	60	42
60	60	45
65	60	53
70	60	56
75	60	59
80	60	62
85	60	65
90	60	68
100	60	79
110	60	85
120	60	91
130	60	96
140	60	102
150	60	108
160	60	114
170	60	120
180	60	126
190	60	131
200	60	138

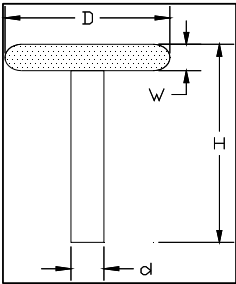
Diamond Mounted Weels Type Electroplated



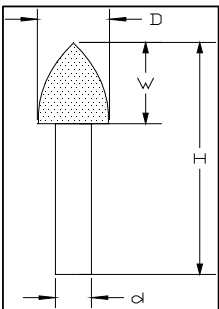
D	d	H	W	Code
5	6	60	4	T1.05.06.049
10	6	60	9	T1.10.06.050



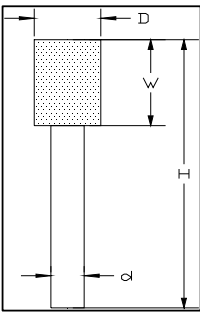
D	d	H	W	Code
48	12	75	25	T2.48.12.051



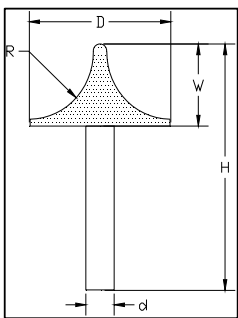
D	d	H	W	Code
20	6	52	6	T3.20.06.052
30	6	52	6	T3.30.06.053



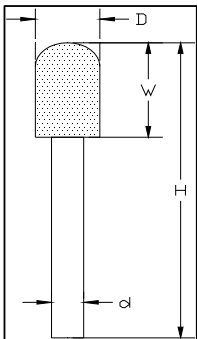
D	d	H	W	Code
9	6	50	9	T4.09.06.054
12	6	60	20	T4.12.06.055
16	6	60	20	T4.16.06.056



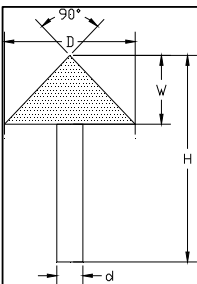
D	d	H	W	CODE
10	6	60	20	T5.10.06.057



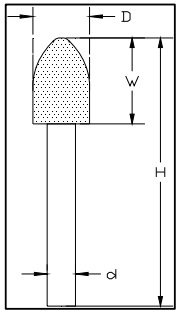
D	d	H	W	CODE
50	12	78	28	T6.50.12.058



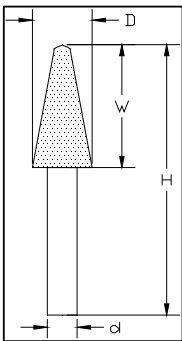
D	d	H	W	CODE
14	12	80	35	T7.14.12.059
10	6	70	35	T7.10.06.060



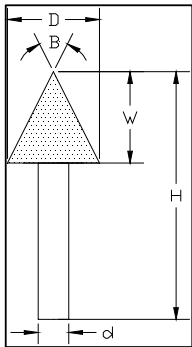
D	d	H	W	CODE
63	12	80	30	T8.63.12.061



D	d	H	W	CODE
14	6	70	30	T9.14.06.062



D	d	H	W	CODE
14	6	70	30	T10.14.06.063



D	d	H	W	B	CODE
8	6	54	14	30	T11.08.06.064
10	6	54	14	40	T11.10.06.065
12	6	54	14	45	T11.12.06.066
15	6	60	20	40	T11.15.06.067

Prices on request

ELECTROPLATED DIAMOND BEADS AND WIRE



	EUR
Electroplated beads 9x10x6 hole 5	0.8
Diamond wire with springs, 33-35 beads/m	28
Plasticized diamond wire, 33 beads/m	40
Plasticized diamond wire for reinforced concrete 40 conical beads/m	60
Plasticized diamond wire for 100% steel 40 conical beads/m	80